



How to take uncertainties into account when quantifying relationships between different quantities?

I THOUGHT I WAS
INTERESTED IN UNCERTAINTY
BUT NOW I'M NOT SO SURE



Tero Mielonen, et al.

Today's menu

- **Definitions**
- **Uncertainties in satellite observations**
- **Uncertainties in modeling**
- **Example on how we have tried to take uncertainties into account when using simulations and observations**



Definitions

- Error and uncertainty are two different things:
 - **Error** – the concept of ‘wrongness’
 - How different is the measured value from the (unknown) true value of the measurand?
 - **Uncertainty** – the concept of ‘doubtfulness’
 - Given the measured value, what range of values is it reasonable to attribute to the measurand?
 - Quantification: “Standard uncertainty” is the standard deviation of the (estimated) error distribution.

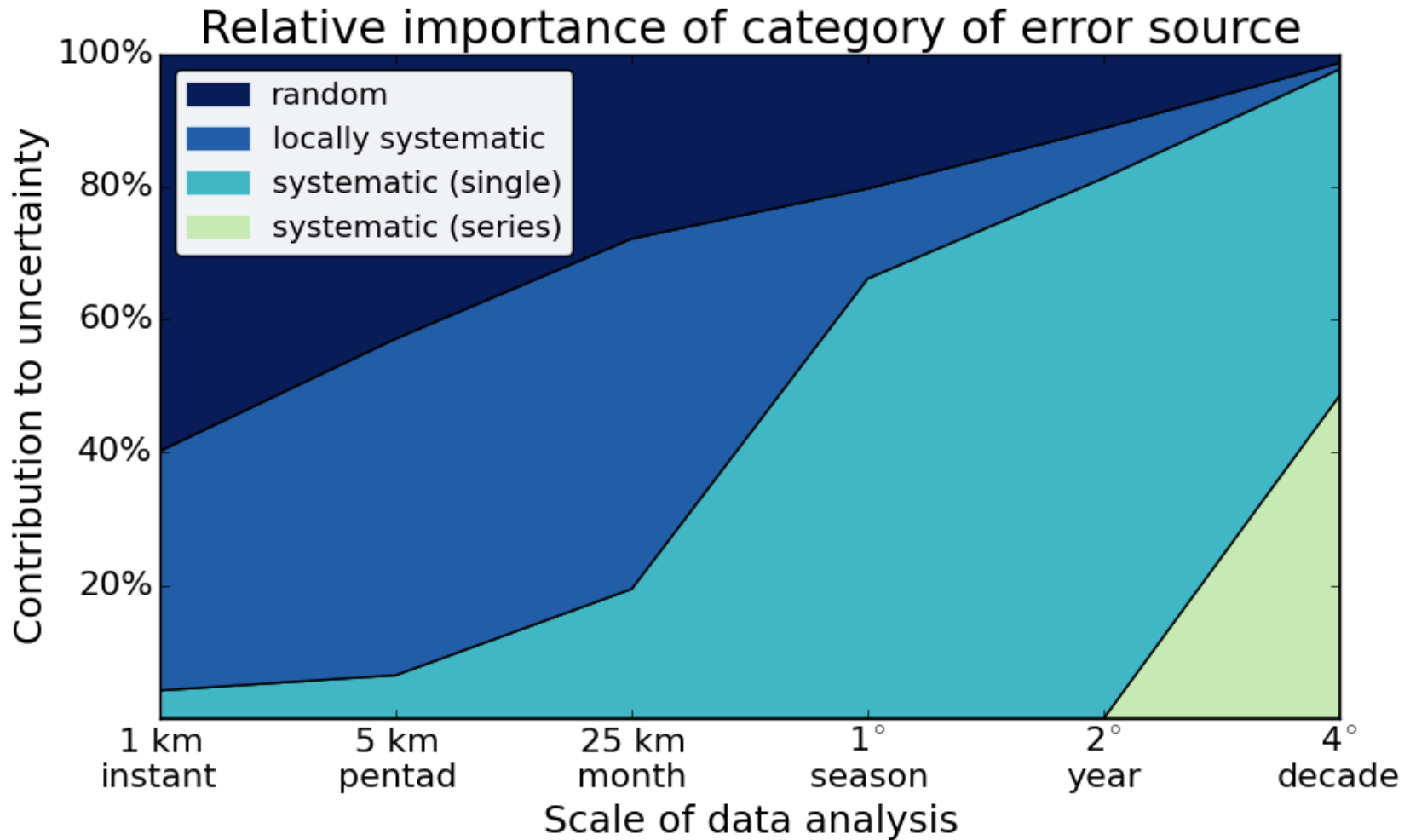
Error is often unknown (and if we did know what it was we would correct for it). We therefore consider uncertainty, a measure of the dispersion of the error distribution.

Definitions

- **Random effect**
 - a source of errors that are uncorrelated between repeated measured values
 - note: errors can be random (uncorrelated); uncertainty cannot be random (or systematic)
- **Systematic effect**
 - a source of correlated errors that you could correct for if you understood it
 - note: this is not the same as bias
 - in Earth observation systematic errors correlate on particular scales of time and space very commonly
 - can be “locally” systematic

(Based on GlobTemp presentations by C. Merchant and D. Ghent)

Uncertainties in satellite observations



(Based on GlobTemp presentations by C. Merchant and D. Ghent)

Uncertainties in satellite observations

Propagation of uncertainties from L2 to L3 gridded products:

- Uncertainties from random effects reduce as $1/\sqrt{n}$
- Uncertainties from locally correlated effects are reduced only at larger scales
- Sampling uncertainty is an additional uncorrelated effect introduced when the grid box is not fully sampled in space or time

(Based on GlobTemp presentations by C. Merchant and D. Ghent)

Uncertainties in satellite observations

Propagation of uncertainties from L2 to L3 gridded products:

- Uncertainties from random effects reduce as $1/\sqrt{n}$
- Uncertainties from locally correlated effects are reduced only at larger scales
- Sampling uncertainty is an additional uncorrelated effect introduced when the grid box is not fully sampled in space or time

→ estimation of L3 uncertainties is very complicated thus rarely done but people are working on it.

Uncertainties in model simulations

Stochastic models do what you make them do → no uncertainty



Uncertainties in model simulations

Stochastic models do what you make them do → no uncertainty

- uncertainty estimates derived typically from
 - multi-model ensembles
 - perturbed simulations from a single model
 - ensemble averages and ensemble standard deviation as a measure of uncertainty

Uncertainties in model simulations

Stochastic models do what you make them do → no uncertainty

- uncertainty estimates derived typically from
 - multi-model ensembles
 - perturbed simulations from a single model
 - ensemble averages and ensemble standard deviation as a measure of uncertainty
- Some pitfalls
 - each model/simulation are thought to produce independent data, and their errors are expected to cancel each other out
 - while models are different, they are not independent in any strict statistical sense; they all are limited by similar computational constraints and have developed in the same modeling tradition.
 - which parameters to perturbate? Just the atmospheric state or all the parameterizations related to the studied process? What are the ranges for the perturbations?

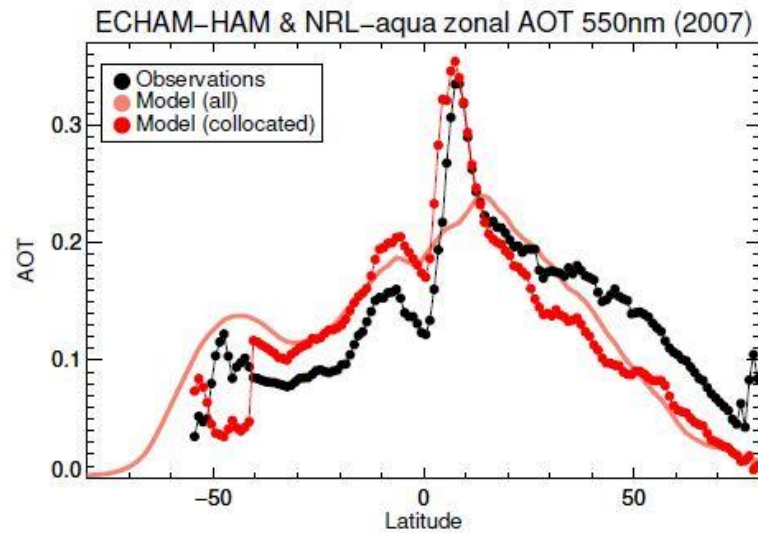
Comparing simulations with observations

Simulations and observations have different spatial and temporal scales/sampling



Comparing simulations with observations

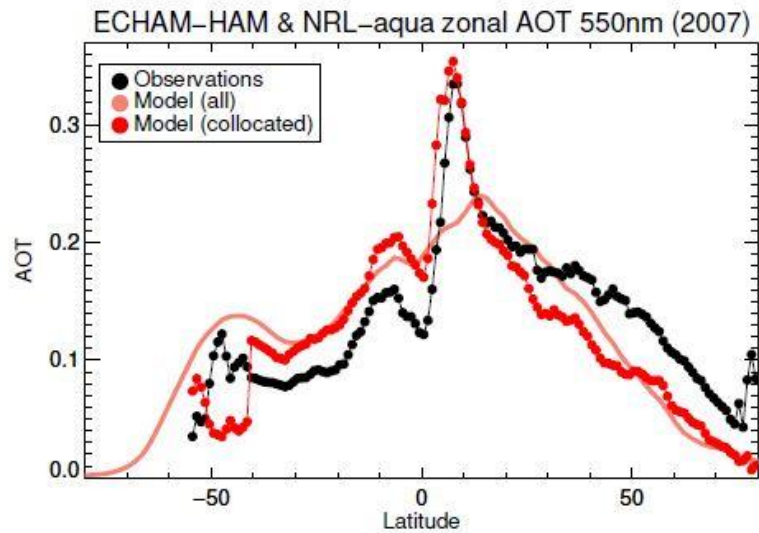
Simulations and observations have different spatial and temporal scales/sampling



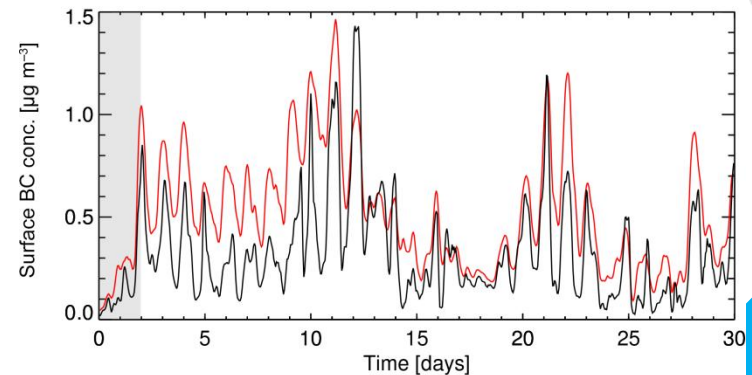
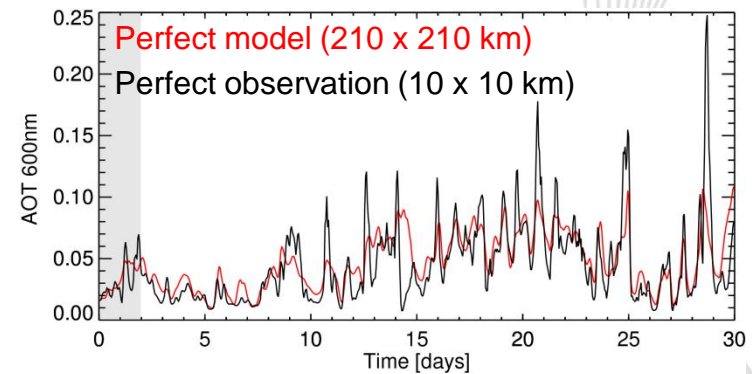
(From Schutgens et al. 2016a and 2016b)

Comparing simulations with observations

Simulations and observations have different spatial and temporal scales/sampling

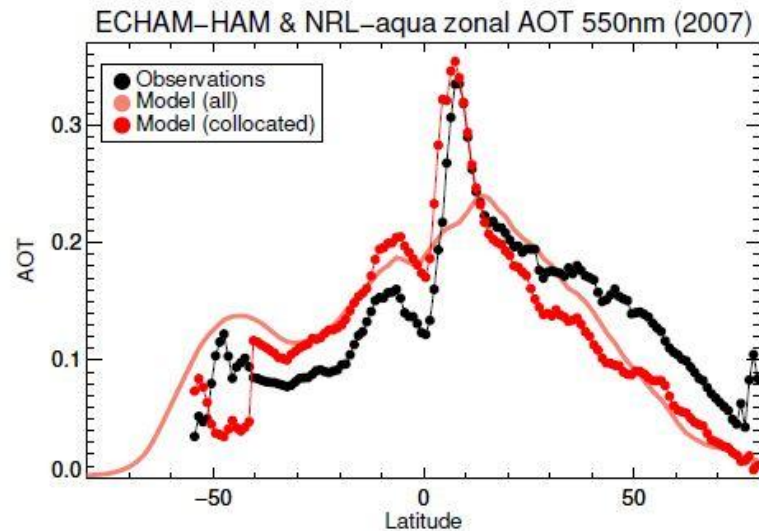


(From Schutgens et al. 2016a and 2016b)

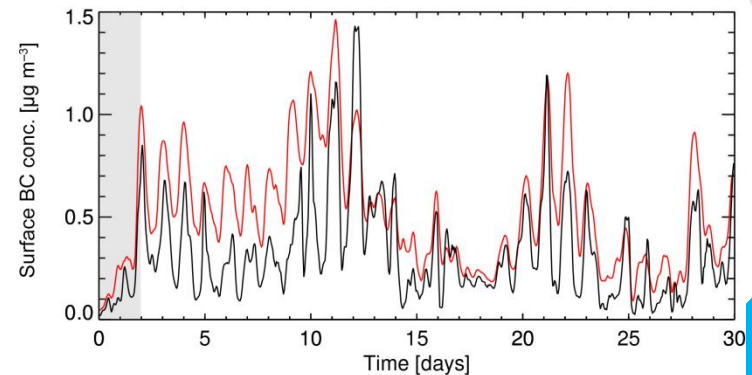
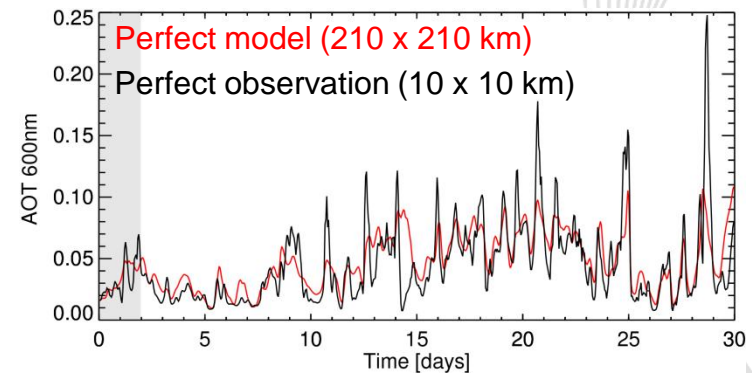


Comparing simulations with observations

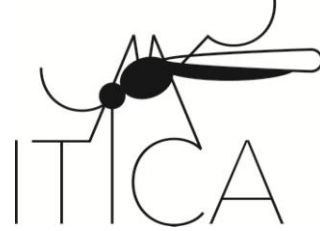
Simulations and observations have different spatial and temporal scales/sampling



(From Schutgens et al. 2016a and 2016b)

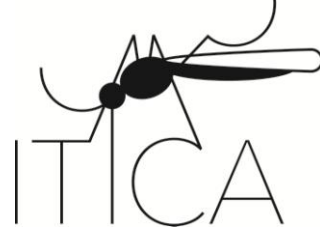


- Model data and observations should be spatio-temporally averaged to ensure best agreement
 - Model data need to be spatially interpolated to and temporally collocated with the observations



Example: the ITICA project

- investigate if biogenic emissions could explain the positive correlation between atmospheric aerosol load (AOD) and temperature (LST) and quantify their radiative effects
 - over the Southeastern US (Goldstein et al. 2009)
 - over boreal regions (Paasonen et al. 2013)
- estimate the significance of the negative feedback caused by a warming-induced increase in the aerosol direct radiative effect



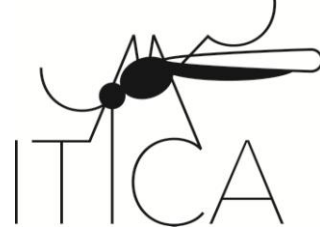
Satellite products used in the project

(2005-2011, Level 3)

- AATSR Land surface temperature (LST)
 - pixel level uncertainty for the L3 data ($0.05^\circ \times 0.05^\circ$)
- AATSR Aerosol Optical Depth (AOD)
 - variability within L3 pixels (standard deviation)
- OMI Nitrogen Dioxide (NO₂)
 - 20 % uncertainty based on literature

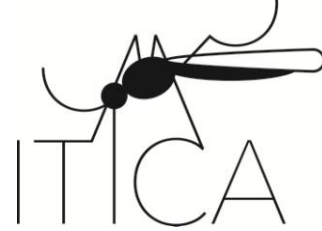
Products mainly collocated to a daily, $1^\circ \times 1^\circ$ grid





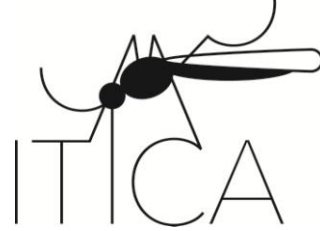
Model simulations done in the project

- Simulations with ECHAM6.1-HAM2.2-SALSA
 - CONTROL (2002-2010)
 - noBIOSOA: without biogenic SOA formation
- Uncertainty/variability estimation based on the variability between daily values within the summer months
 - used a statistical method called bootstrapping
 - information on how well the averaged value represents the underlying distribution

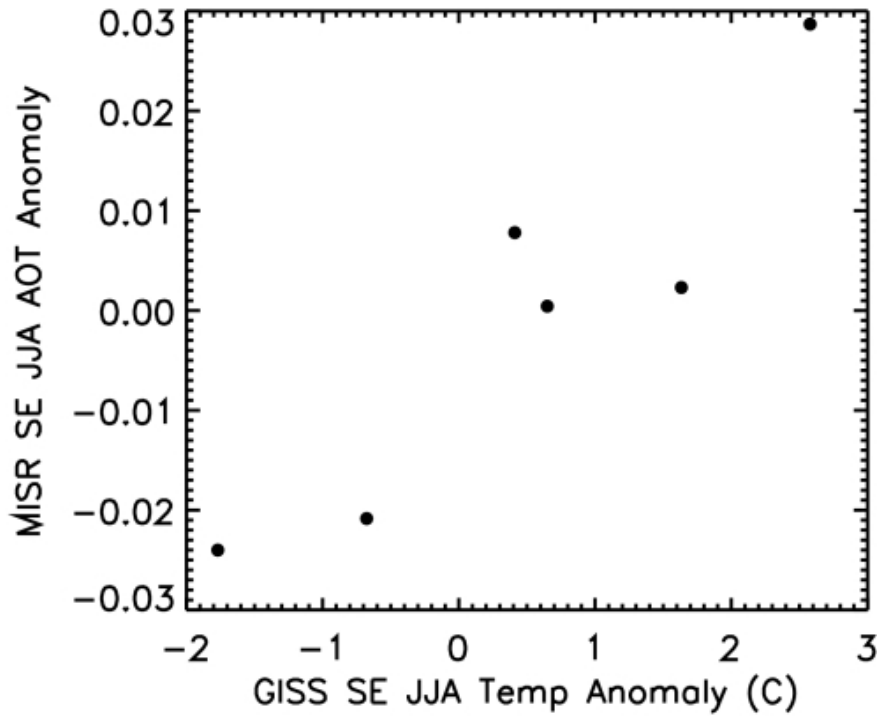


Linear fitting

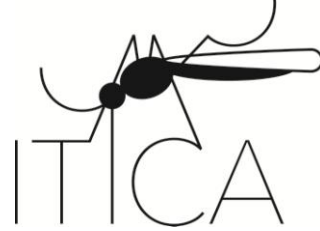
- As a “sanity check” we tested statistically if a linear relationship between the parameters was more likely than a random relationship
- Linear fitting was done using Bayesian inference
 - uncertainties in both dependent and independent variables were taken into account
 - the method produced credibility intervals for the estimated parameters



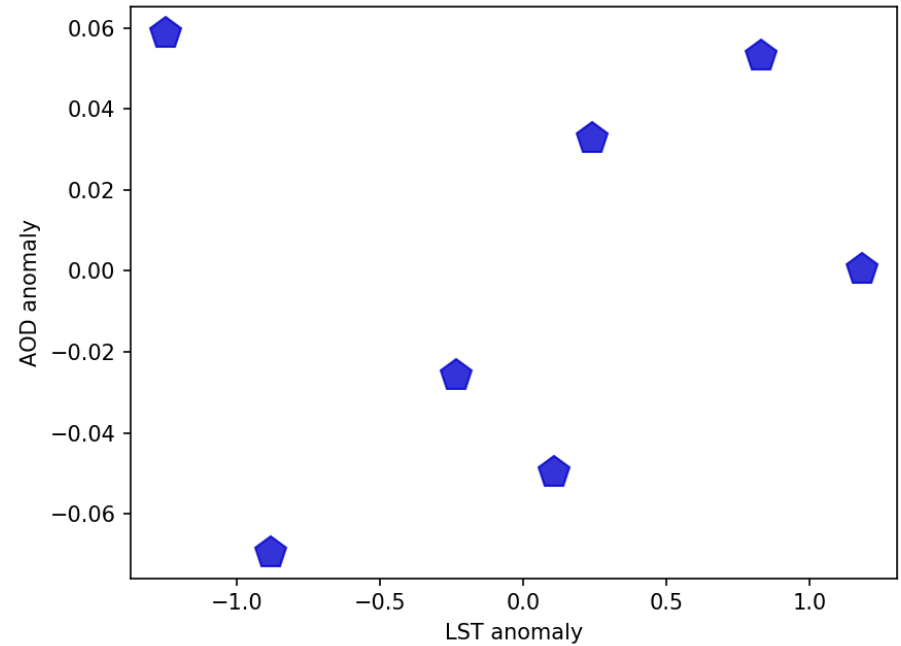
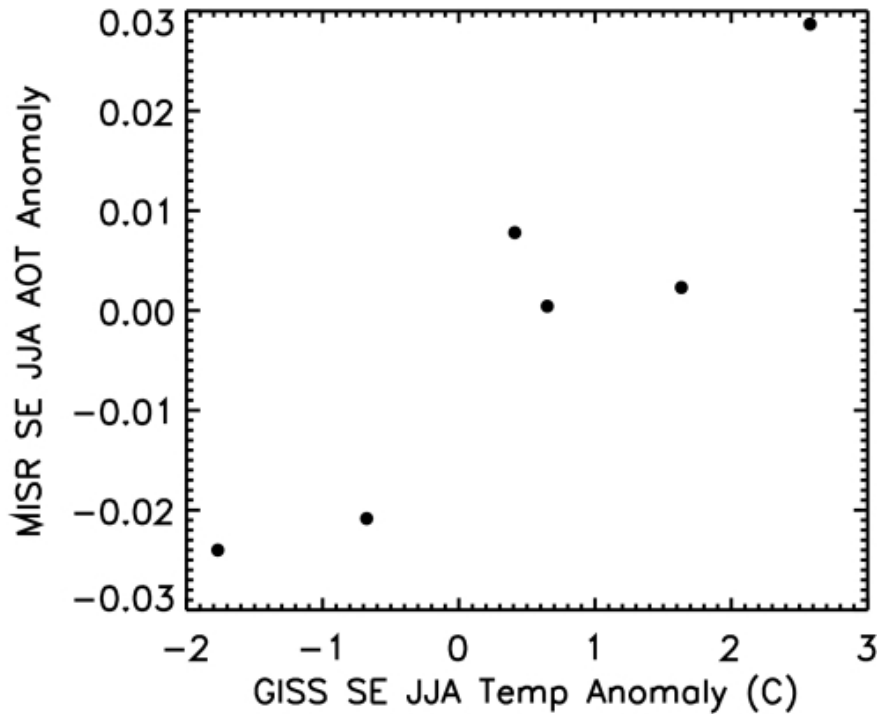
Results: Southeastern US



Goldstein et al. (2009)
Years 2000-2005

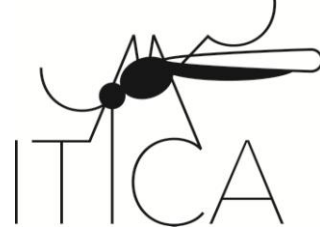


Results: Southeastern US



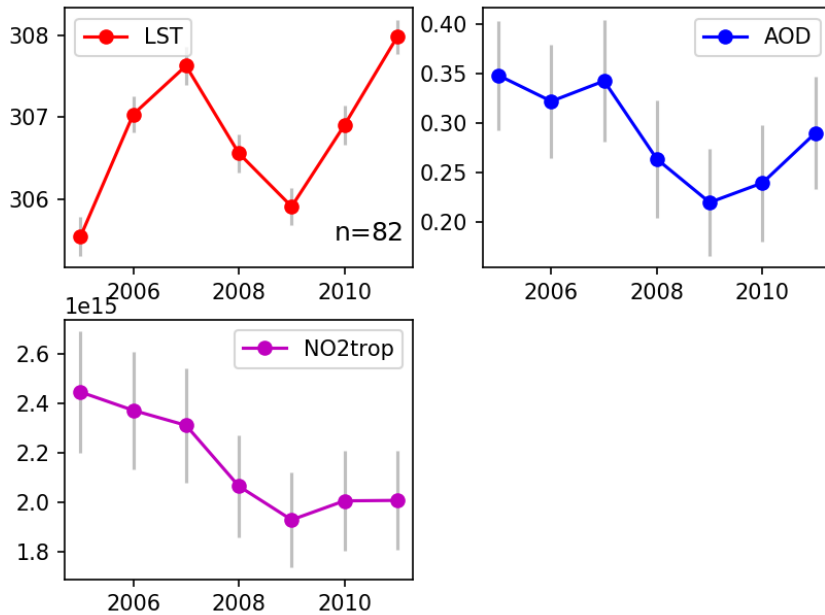
Goldstein et al. (2009)
Years 2000-2005

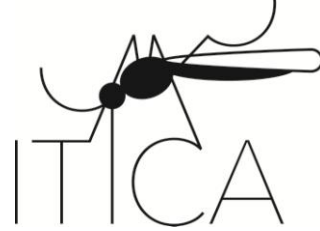
AATSR data (JJA)
Years 2005-2011



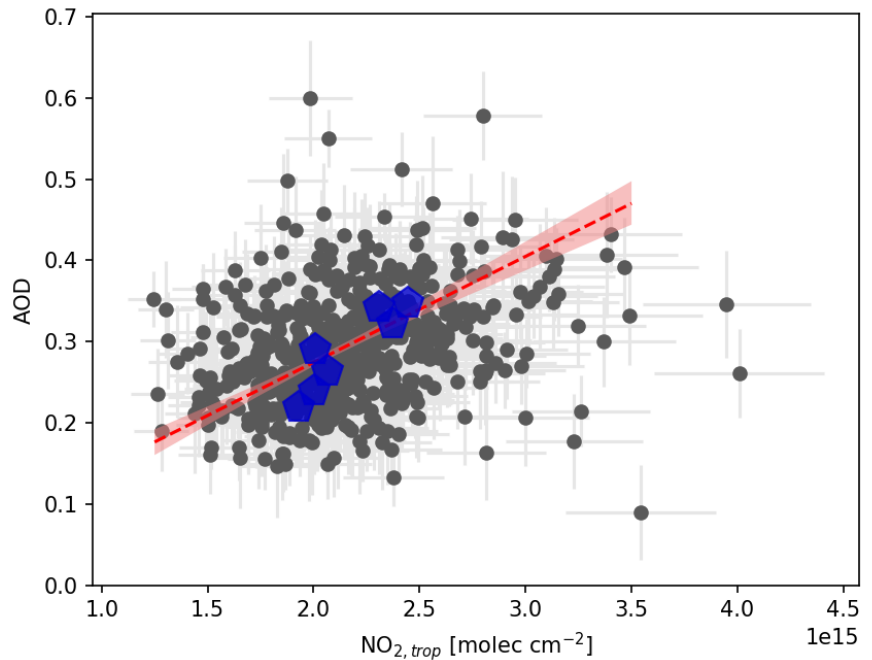
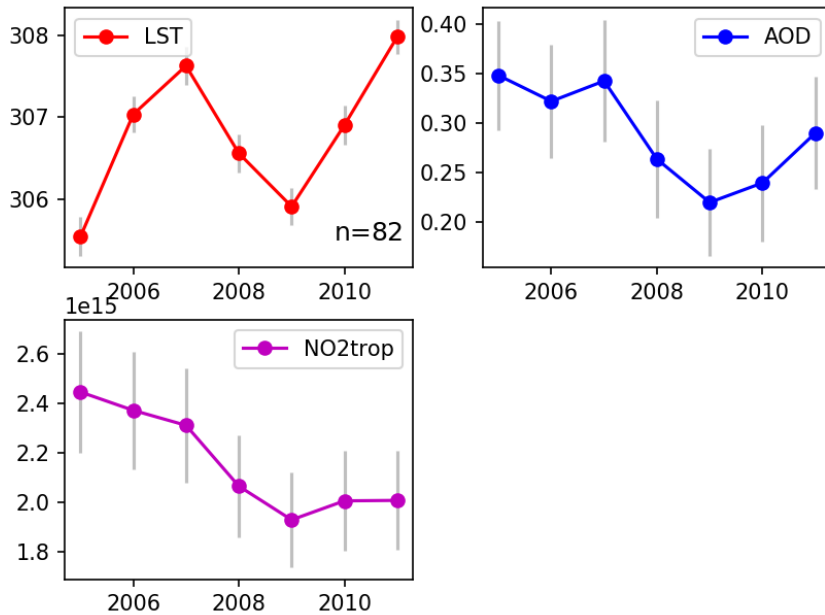
Results:

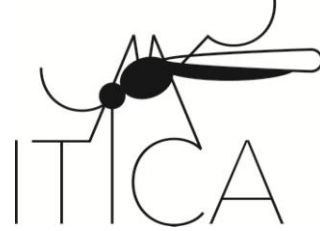
Comparison of summers in the southeastern US





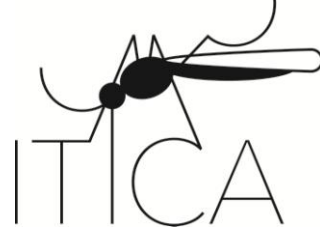
Results: Comparison of summers in the southeastern US



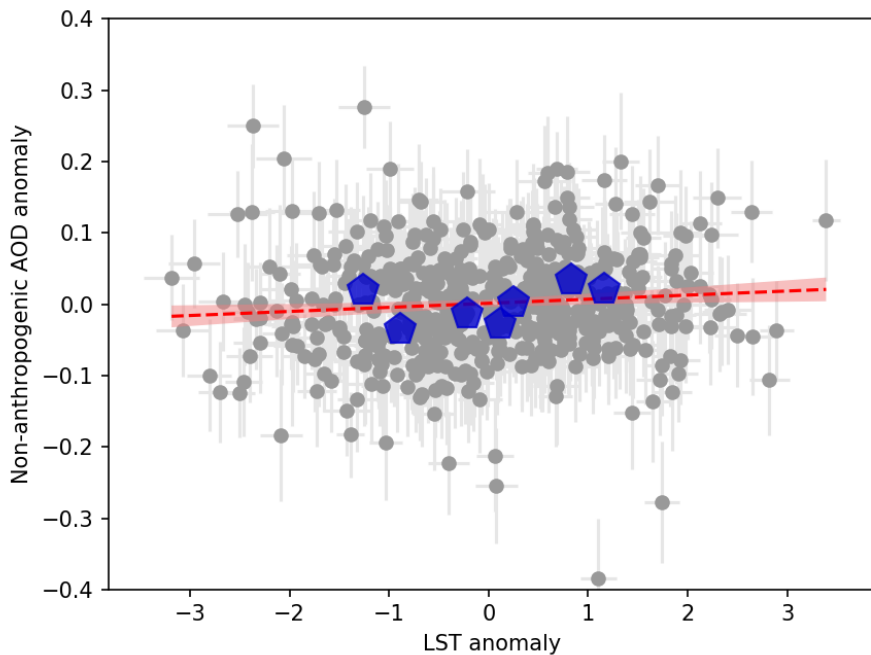


Results: Calculation of “non-anthro” AOD

- anthropogenic contribution was estimated with a linear fit between the summertime AOD and tropospheric NO₂ columns ($AOD=1.31e^{-16}NO_{2,trop}+0.013$)
- with this relationship the anthropogenic AOD was estimated from the observed tropospheric NO₂ values
- the “non-anthro” AOD was estimated by subtracting the anthropogenic AOD from the total AOD

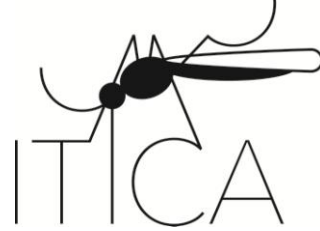


Results: Calculation of “non-anthro” AOD

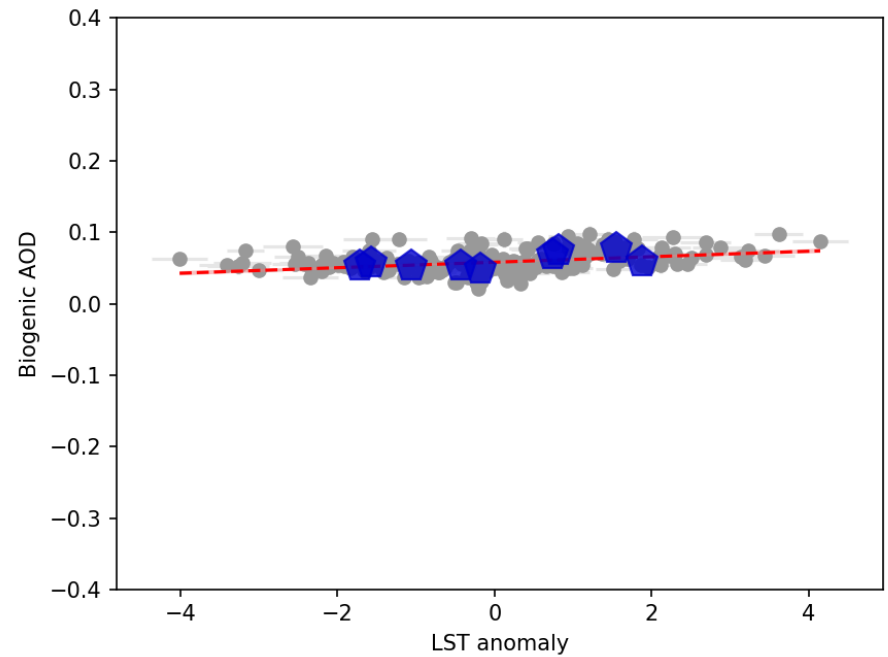
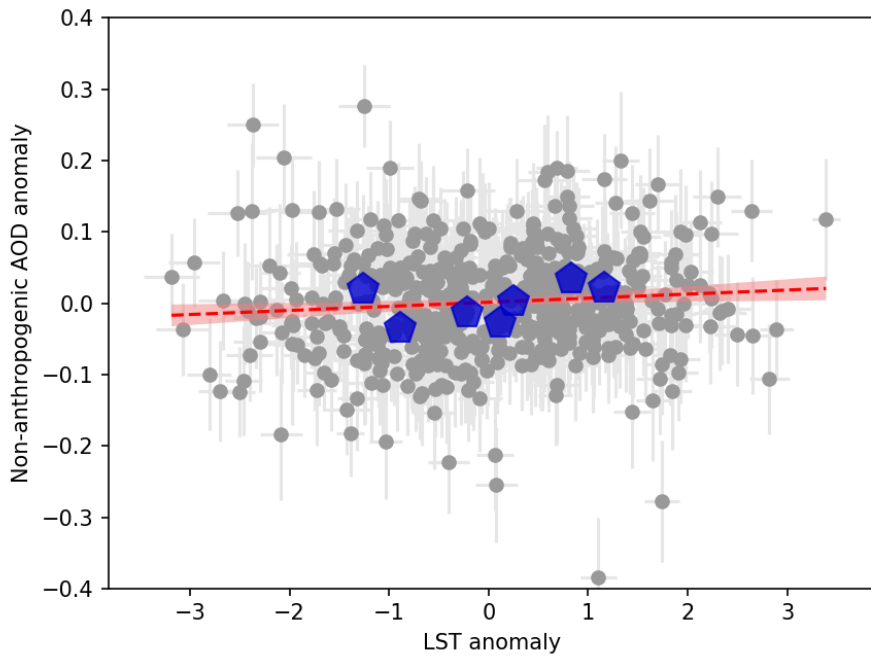


$$\text{AOD}_{\text{NA,ano}} = 0.006(\pm 0.004) * \text{LST}_{\text{ano}} - 0.001$$

- anthropogenic contribution was estimated with a linear fit between the summertime AOD and tropospheric NO_2 columns ($\text{AOD} = 1.31 \times 10^{-16} \text{NO}_{2,\text{trop}} + 0.013$)
- with this relationship the anthropogenic AOD was estimated from the observed tropospheric NO_2 values
- the “non-anthro” AOD was estimated by subtracting the anthropogenic AOD from the total AOD

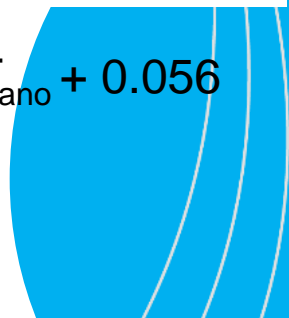


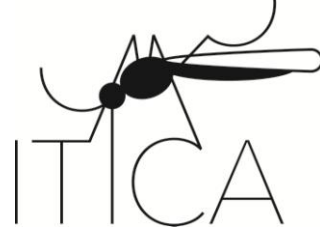
Results: Model comparison



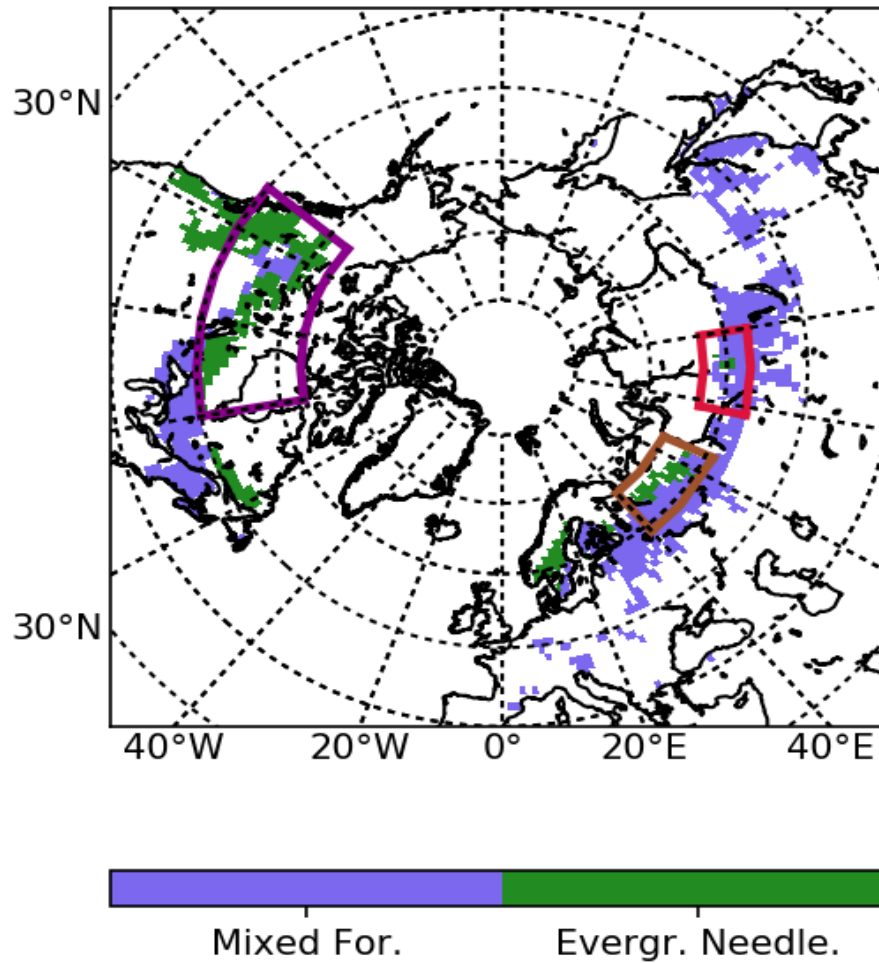
$$AOD_{NA,ano} = 0.006(\pm 0.004) * LST_{ano} - 0.001$$

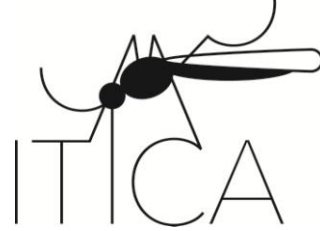
$$AOD_{bio} = 0.004(\pm 0.001) * LST_{ano} + 0.056$$



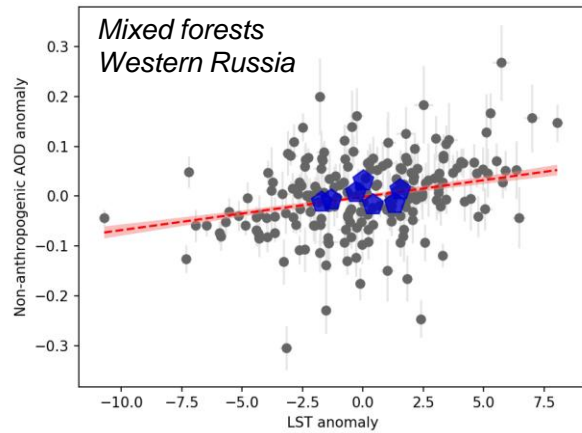


Results: Boreal regions

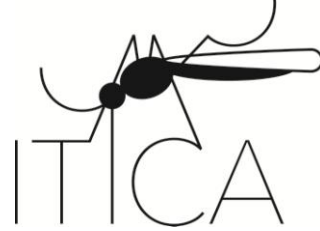




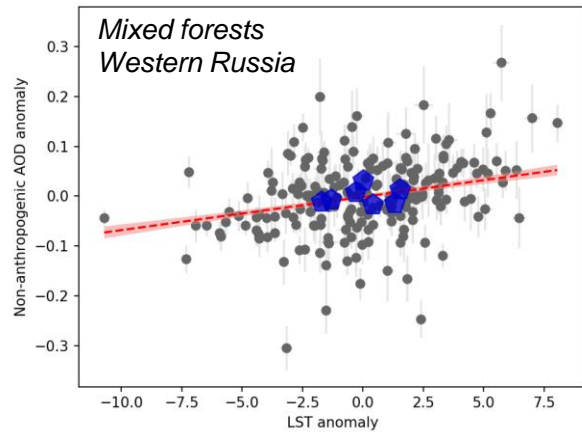
Results: Western and Eastern Russia



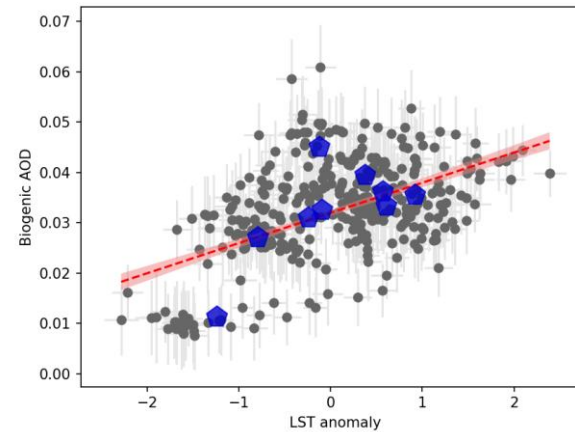
$$AOD_{NA,ano} = 0.007(\pm 0.001) * LST_{ano} - 0.001$$



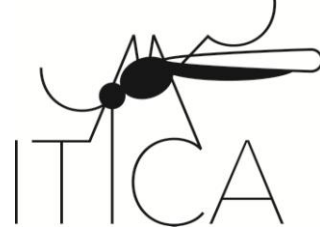
Results: Western and Eastern Russia



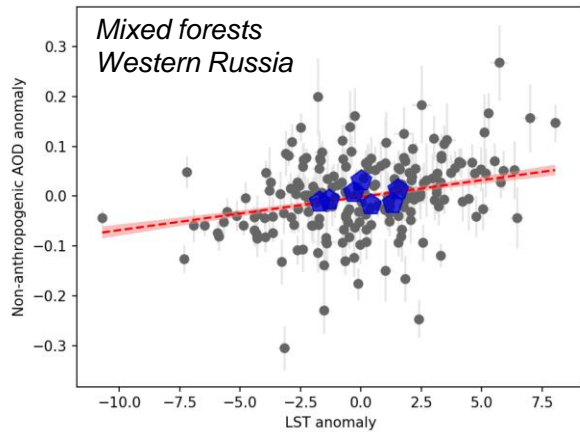
$$AOD_{NA,ano} = 0.007(\pm 0.001) * LST_{ano} - 0.001$$



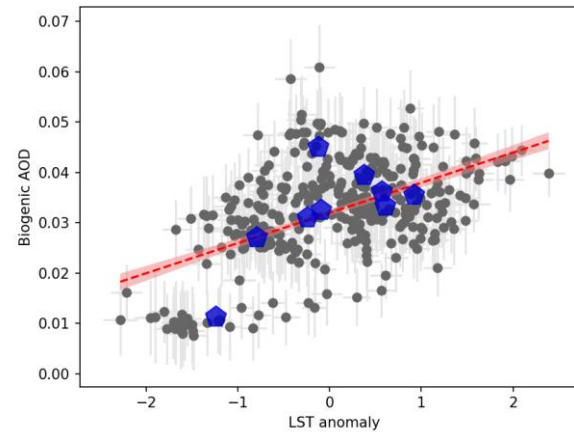
$$AOD_{bio} = 0.006(\pm 0.001) * LST_{ano} + 0.032$$



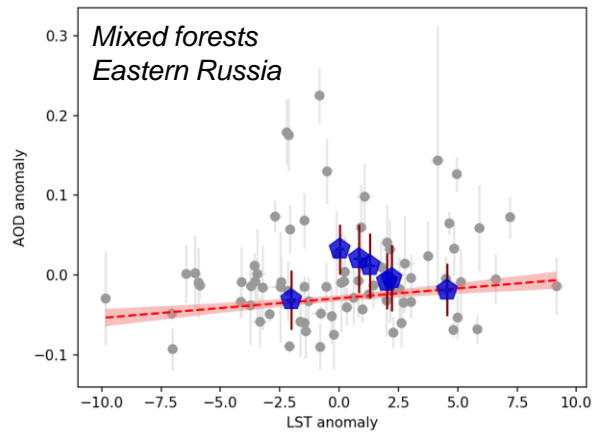
Results: Western and Eastern Russia



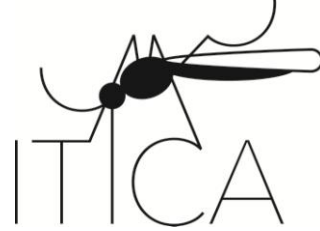
$$AOD_{NA,ano} = 0.007(\pm 0.001) * LST_{ano} - 0.001$$



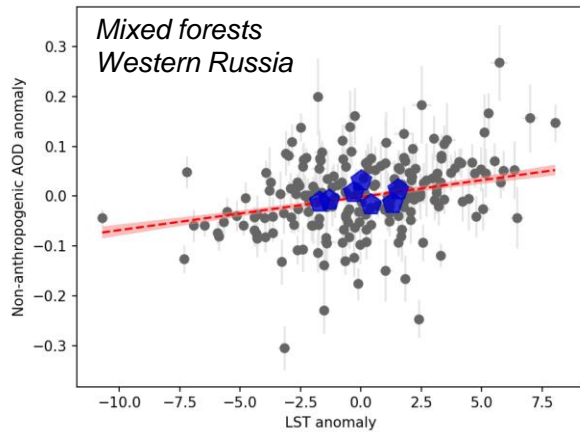
$$AOD_{bio} = 0.006(\pm 0.001) * LST_{ano} + 0.032$$



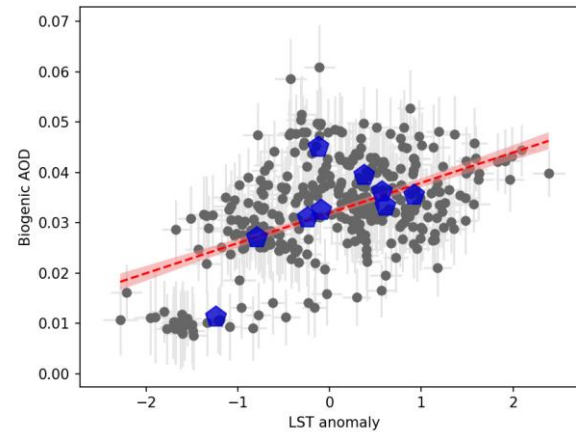
$$AOD_{ano} = 0.0025(\pm 0.0010) * LST_{ano} - 0.003$$



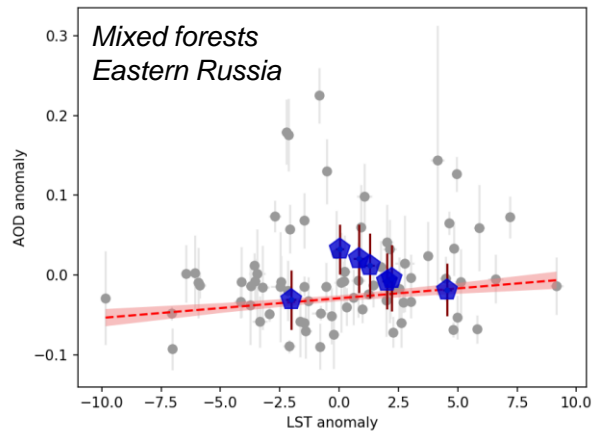
Results: Western and Eastern Russia



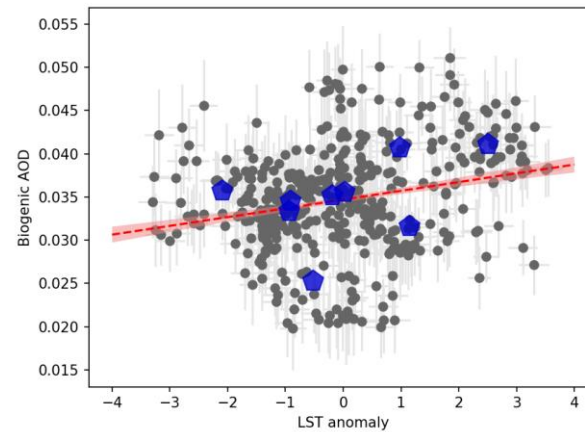
$$AOD_{NA,ano} = 0.007(\pm 0.001) * LST_{ano} - 0.001$$



$$AOD_{bio} = 0.006(\pm 0.001) * LST_{ano} + 0.032$$



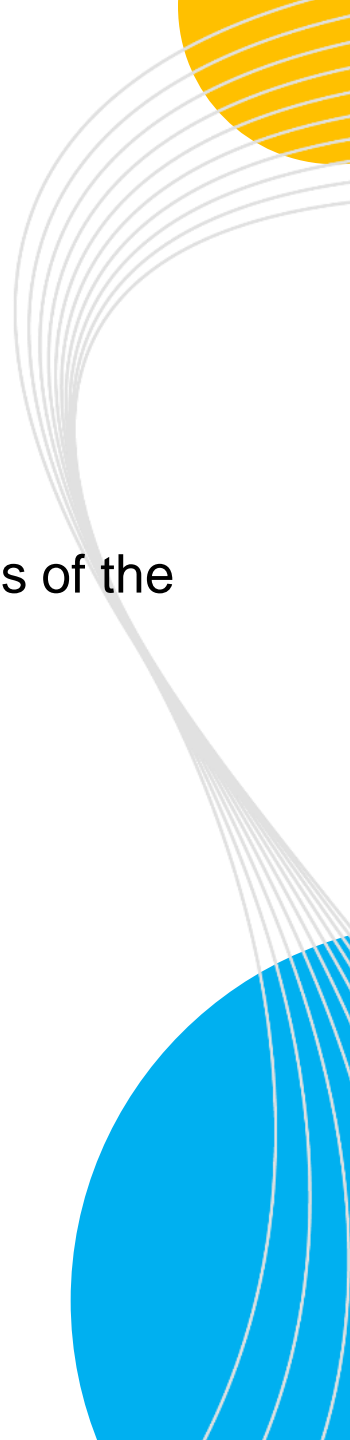
$$AOD_{ano} = 0.0025(\pm 0.0010) * LST_{ano} - 0.003$$



$$AOD_{bio} = 0.0012(\pm 0.0002) * LST_{ano} + 0.035$$

Conclusions

- In order to get meaningful results and conclusions, uncertainties of the used data sets should be considered



Conclusions

- In order to get meaningful results and conclusions, uncertainties of the used data sets should be considered
- Models are not able to reproduce observations perfectly
 - use them to test hypotheses
 - instead of absolute values you can use anomalies and variability

Thank you!



FINNISH METEOROLOGICAL INSTITUTE

www.fmi.fi